



# ΔΟΧΕΙΑ ΑΔΡΑΝΕΙΑΣ

# AD 200

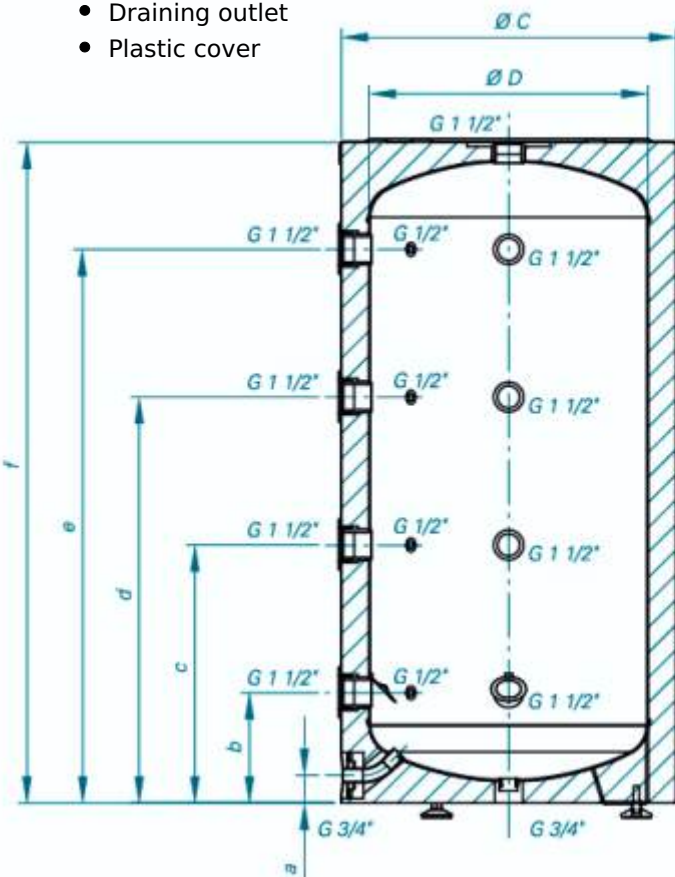
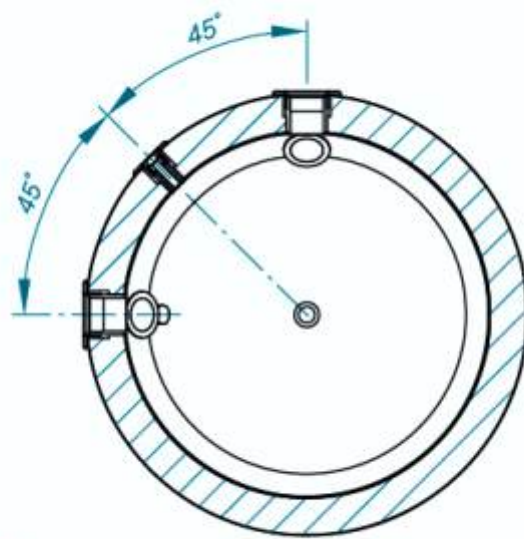


- Steel water tank - not enameled
- Highly efficient CFC FREE 50 mm polyurethane insulation
- External Thermoindicator
- Safety valve
- 4 pockets for thermosensors
- 4 + 5 system connections
- Inlet connection
- Airvent/Outlet connection
- Draining outlet
- Plastic cover

## Main information

### Technical characteristics

Nominal capacity [L]	200 L
Water tank protection type	Steel water tank - not enameled
Rated pressure of the water tank	0.3 MPa
Maximum operational temperature	95 T°C
Dimensions [mm] [D/h]	600 x 1200 mm
Net weight [kg]	43
Safety valve	Yes
Pocket for thermosensor	4 pcs.
4+5 Inlet / Outlet	Yes
Draining outlet	Yes



V 200 60 F40 P4  
V 300 65 F41 P4  
V 500 75 F42 P4

### Dimensions [mm $\pm 5$ ]

TESY V 200 60 F40 P4	
a [mm]	50
b [mm]	198
c [mm]	463
d [mm]	728
e [mm]	993
f [mm]	1200
$\varnothing C$ [mm]	500
$\varnothing D$ [mm]	600

# AD 300

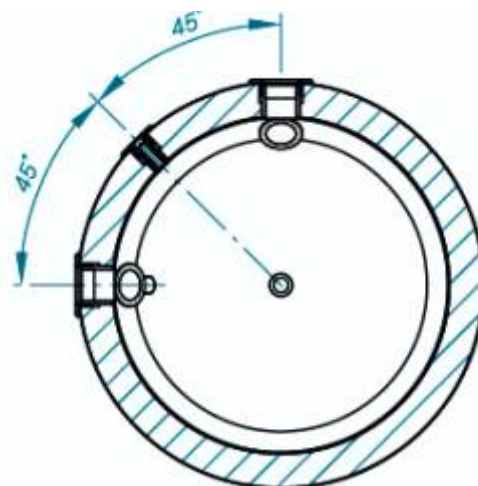


- Steel water tank - not enameled
- Highly efficient CFC FREE 50 mm polyurethane insulation
- External Thermoindicator
- Safety valve
- 4 pockets for thermosensors
- 4 + 5 system connections
- Inlet connection
- Airvent/Outlet connection
- Draining outlet
- Plastic cover

## Main information

### Technical characteristics

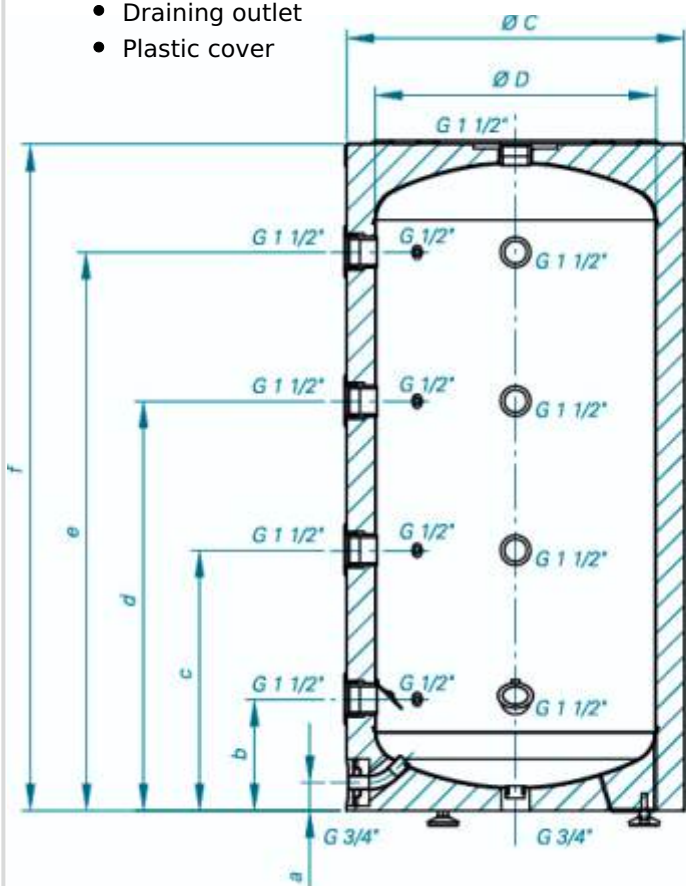
Nominal capacity [L]	300 L
Water tank protection type	Steel water tank - not enameled
Rated pressure of the water tank	0.3 MPa
Maximum operational temperature	95 T°C
Dimensions [mm] [D/h]	650 x 1420 mm
Net weight [kg]	55
Safety valve	Yes
Pocket for thermosensor	4 pcs.
4+5 Inlet / Outlet	Yes
Draining outlet	Yes
Warranty	3 years



V 300 65 F41 P4

Dimensions [mm ±5]

TESY V 300 65 F41 P4	
a [mm]	52
b [mm]	203
c [mm]	538
d [mm]	873
e [mm]	1208
f [mm]	1420
Ø C [mm]	550
Ø D [mm]	650



# AD 500

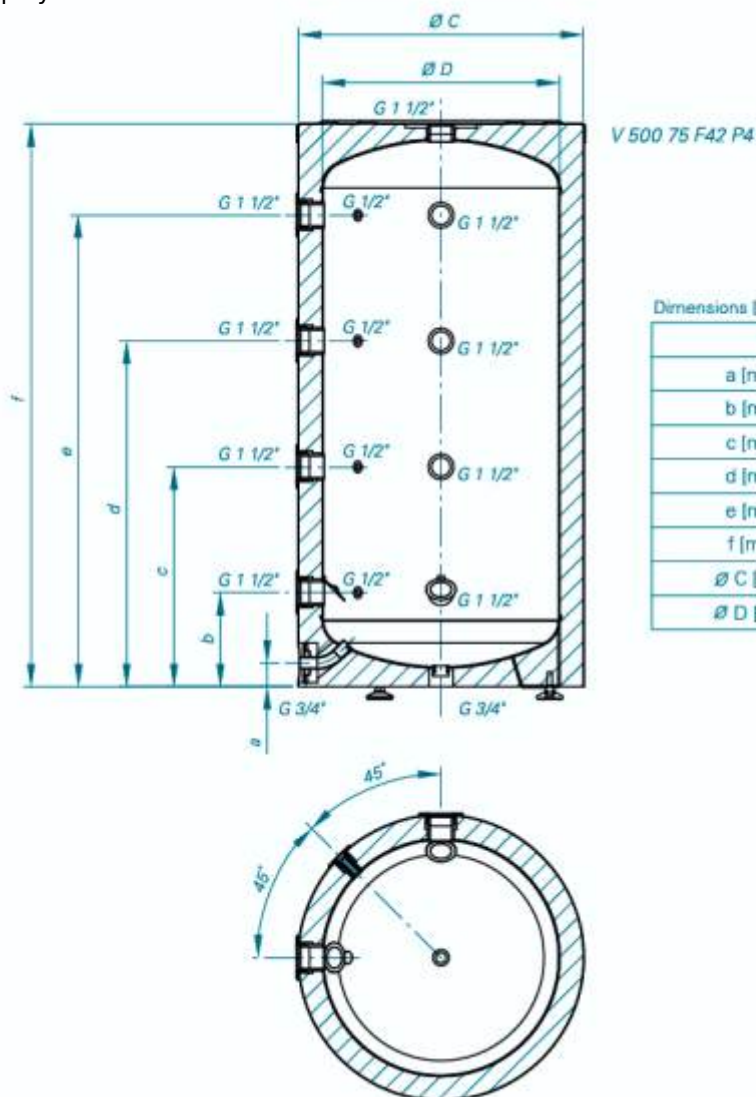


## Main information

### Technical characteristics

Nominal capacity [L]	500 L
Water tank protection type	Steel water tank - not enameled
Rated pressure of the water tank	0.3 MPa
Maximum operational temperature	95 T°C
Dimensions [mm] [D/h]	750 x 1671 mm
Net weight [kg]	83
Safety valve	Yes
Pocket for thermosensor	4 pcs.
4+5 Inlet / Outlet	Yes
Draining outlet	Yes

- Steel water tank - not enameled
- Highly efficient CFC FREE 50 mm polyurethane insulation
- External Thermoindicator
- Safety valve
- 4 pockets for thermosensors
- 4 + 5 system connections
- Inlet connection
- Airvent/Outlet connection
- Draining outlet
- Plastic cover





# AD 800

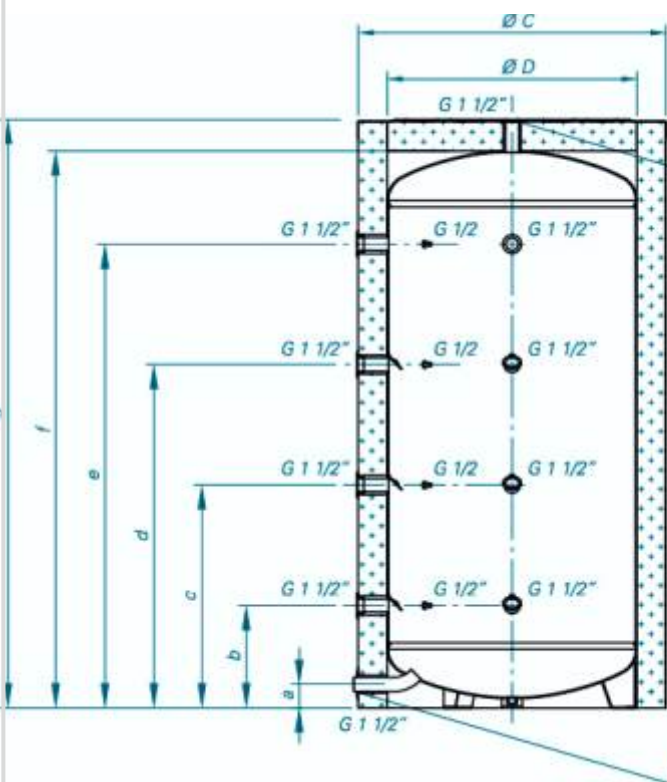
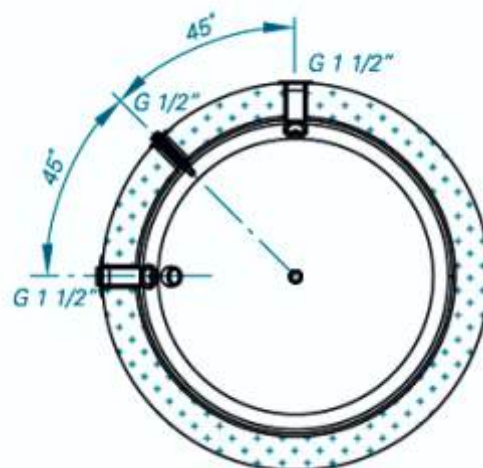


## Main information

### Technical characteristics

Nominal capacity [L]	800 L
Water tank protection type	Steel water tank - not enameled
Rated pressure of the water tank	0.3 MPa
Maximum operational temperature	95 T°C
Dimensions [mm] [D/h]	900 x 1937 mm
Net weight [kg]	124
Safety valve	Yes
Pocket for thermosensor	4 pcs.
4+5 Inlet / Outlet	Yes
Draining outlet	Yes

- Steel water tank - not enameled
- Highly efficient CFC FREE 50 mm polyurethane insulation
- External Thermoindicator
- Safety valve
- 4 pockets for thermosensors
- 4 + 5 system connections
- Inlet connection
- Airvent/Outlet connection
- Draining outlet
- Plastic cover



V 800 99 F43 P4  
V 1000 105 F44 P4

Dimensions [mm ± 5]

TESY V 800 99 F43 P4	
a [mm]	82
b [mm]	360
c [mm]	740
d [mm]	1120
e [mm]	1500
f [mm]	1821
g [mm]	1937
h [mm]	1962
Ø C [mm]	790
Ø D [mm]	990

# AD 1000

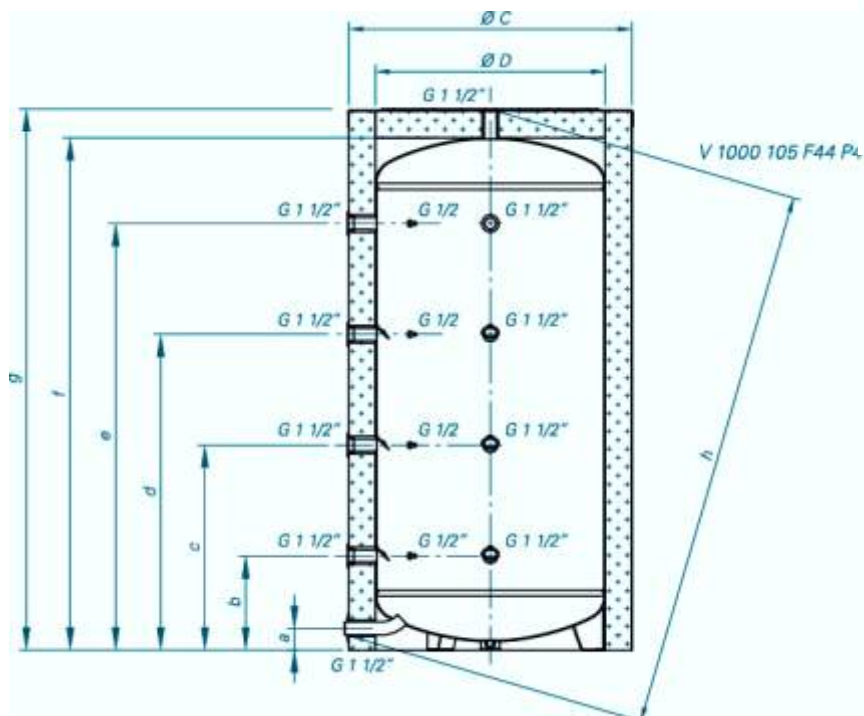
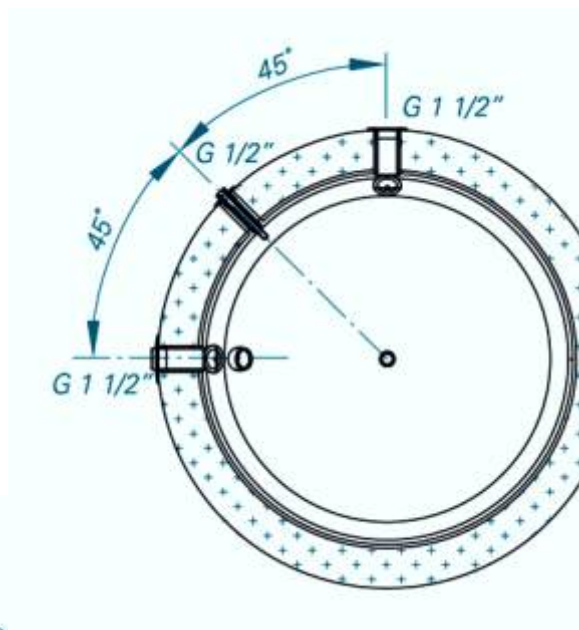


## Main information

### Technical characteristics

Nominal capacity [L]	1000 L
Water tank protection type	Steel water tank - not enameled
Rated pressure of the water tank	0.3 MPa
Maximum operational temperature	95 T°C
Dimensions [mm] [D/h]	1050 x 2002 mm
Net weight [kg]	139
Safety valve	Yes
Pocket for thermosensor	4 pcs.
4+5 Inlet / Outlet	Yes
Draining outlet	Yes

- Steel water tank - not enameled
- Highly efficient CFC FREE 50 mm polyurethane insulation
- External Thermoindicator
- Safety valve
- 4 pockets for thermosensors
- 4 + 5 system connections
- Inlet connection
- Airvent/Outlet connection
- Draining outlet
- Plastic cover



Dimensions [mm ± 5]

TESY V 1000 105 F44 P4	
a [mm]	80
b [mm]	348
c [mm]	758
d [mm]	1168
e [mm]	1578
f [mm]	1895
g [mm]	2002
h [mm]	2017
Ø C [mm]	850
Ø D [mm]	1050

# AD 1500

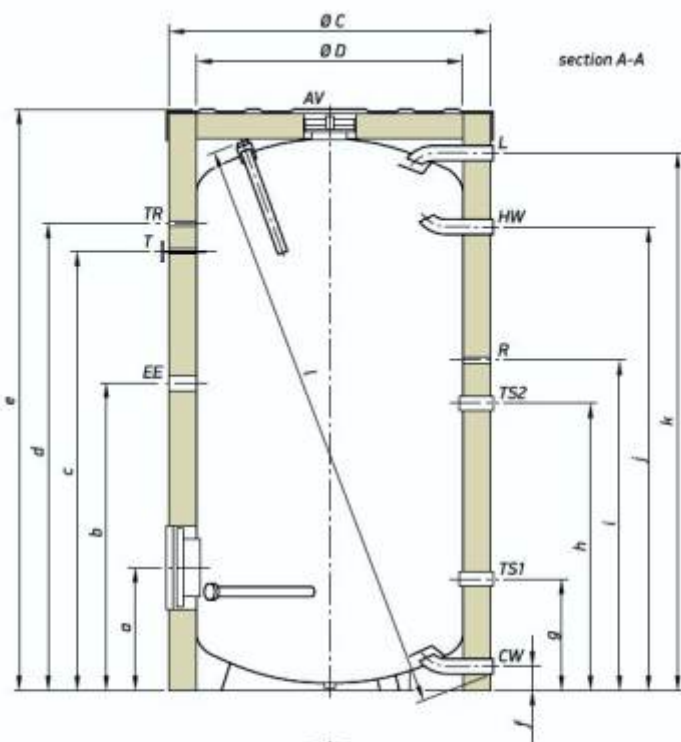


## Main information

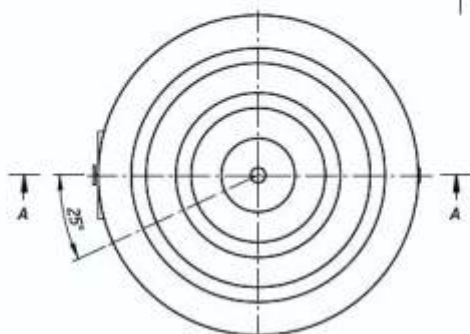
### Technical characteristics

Nominal capacity [L]	1500 L
Water tank protection type	Steel water tank - not enameled
Rated pressure of the water tank	0.3 MPa
Maximum operational temperature	95 T°C
Safety valve	Yes
Pocket for thermosensor	4 pcs.
4+5 Inlet / Outlet	Yes
Draining outlet	Yes
Dimensions [mm] [D/h]	1200 x 2220 mm
Net weight [kg]	285

- Enameled steel water tank
- Highly efficient Soft PU insulation 100 mm
- Anode protection
- External Thermoindicator
- Safety valve
- 4 pockets for thermosensors
- 1+1 Inlet/Outlet
- Recirculation connection
- Opening for Safety valve
- Access to the inside of the water tank through easily removable flange
- Plastic external cover
- Possibility to install heating element - 2 mounting positions



Dimensions [±5 mm]	EV 1500 120 F4.5 TP2	EV 2000 130 F4.6 TP2
a [mm]	467	497
b [mm]	1167	1287
c [mm]	1665	1827
d [mm]	1767	1927
e [mm]	2193	2399
f [mm]	90	90
g [mm]	367	397
h [mm]	1080	1141
i [mm]	1250	1370
j [mm]	1750	1915
k [mm]	2061	2263
l [mm]	2214	2412
Ø C [mm]	1200	1300
Ø D [mm]	1000	1100



- L - battery charging - G 2" B  
 CW - cold water inlet - G 2" B  
 HW - hot water outlet - G 2" B  
 R - recirculation - G 1½"  
 TS - 1; 2 - thermosensor - G ½"  
 EE - opening for electrical element - G 1½"  
 T - external thermometer - Ø 14 x 1.5  
 TR - opening for thermoregulator - G ½"  
 AV - opening for air ventilation - G ¾"

Thread designations according to EN ISO 228-1/

# AD 2000

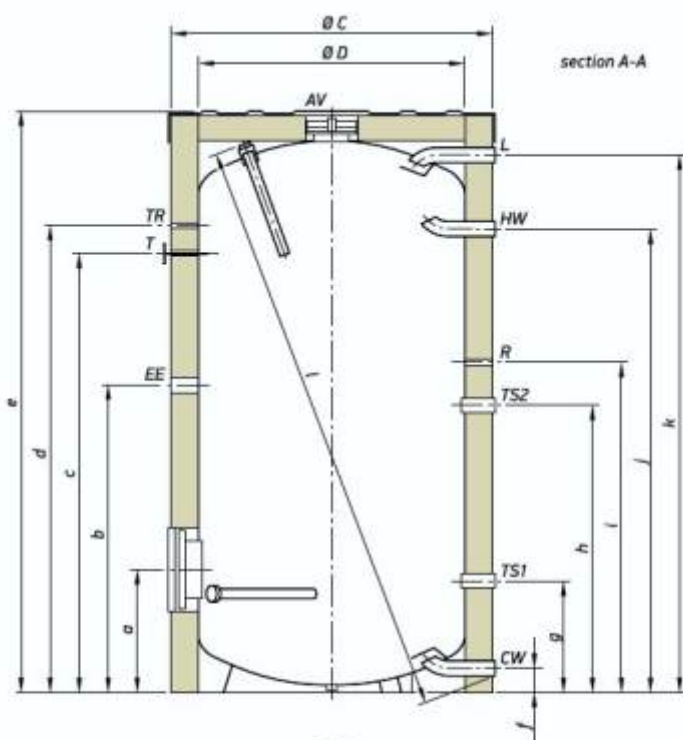


## Main information

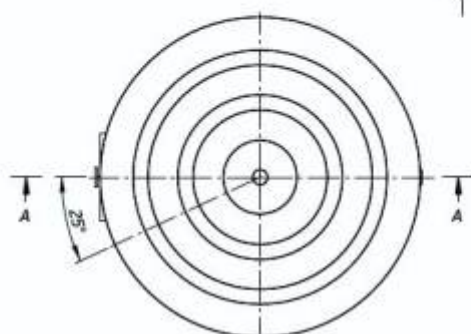
### Technical characteristics

Nominal capacity [L]	2000 L
Water tank protection type	Steel water tank - not enameled
Rated pressure of the water tank	0.3 MPa
Maximum operational temperature	95 T°C
Safety valve	Yes
Pocket for thermosensor	4 pcs.
4+5 Inlet / Outlet	Yes
Draining outlet	Yes
Dimensions [mm] [D/h]	1300 x 2418 mm
Net weight [kg]	356

- Enameled steel water tank
- Highly efficient Soft PU insulation 100 mm
- Anode protection
- External Thermoindicator
- Safety valve
- 4 pockets for thermosensors
- 1+1 Inlet/Outlet
- Recirculation connection
- Opening for Safety valve
- Access to the inside of the water tank through easily removable flange
- Plastic external cover
- Possibility to install heating element - 2 mounting positions



Dimensions [±5 mm]	EV 1500 120 F45 TP2	EV 2000 130 F46 TP2
a [mm]	467	497
b [mm]	1167	1287
c [mm]	1665	1827
d [mm]	1767	1927
e [mm]	2193	2399
f [mm]	90	90
g [mm]	367	397
h [mm]	1080	1141
i [mm]	1250	1370
j [mm]	1750	1915
k [mm]	2061	2263
l [mm]	2214	2412
Ø C [mm]	1200	1300
Ø D [mm]	1000	1100



- L - battery charging - G 2" B
- CW - cold water inlet - G 2" B
- HW - hot water outlet - G 2" B
- R - recirculation - G 1½"
- TS - 1; 2 - thermosensor - G ½"
- EE - opening for electrical element - G 1½"
- T - external thermometer - Ø 14 x 1.5
- TR - opening for thermoregulator - G ½"
- AV - opening for air ventilation - G ¾"

Thread designations according to EN ISO 228-11



# AD-H 400

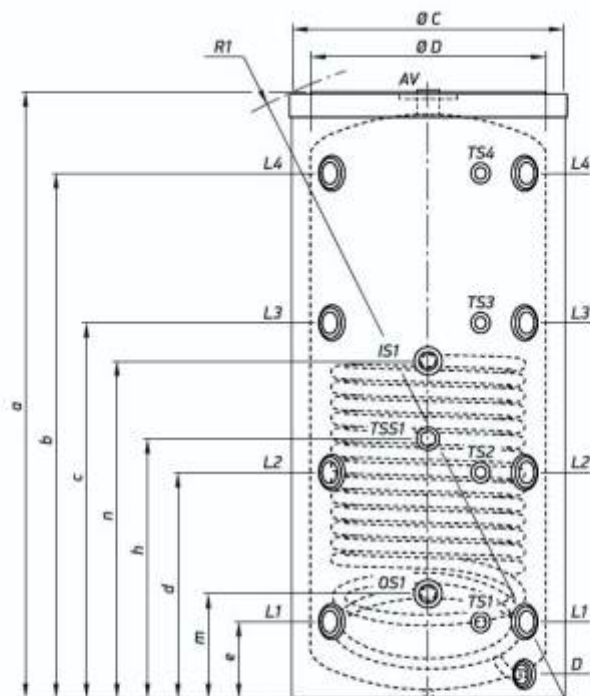


## Main information

### Technical characteristics

Nominal capacity [L]	400 L
Water tank protection type	Steel water tank - not enameled
Rated pressure of the water tank	0.3 MPa
Safety valve	Yes
Pocket for thermosensor	5 pc.
4+5 Inlet / Outlet	Yes
Draining outlet	Yes
Heat exchanger surface [m <sup>2</sup> ]	1.65 m <sup>2</sup>
Heat exchanger capacity [L]	10 L
Heat losses ΔT45K	2.8 kWh/24h
Maximum operational temperature	95 T°C
Maximum operational temperature of the heat exchanger	110 T°C
Dimensions [mm] [D/h]	750 mm x 1409 mm
Net weight [kg]	88
* Уреда се произвежда само по предварителна поръчка	!

- Steel water tank - not enameled
- Highly efficient Soft PU insulation 100 mm
- External Thermoindicator
- Safety valve
- 4 pockets for thermosensors
- 4 + 5 system connections
- Inlet connection
- Airvent/Outlet connection
- Draining outlet
- Plastic cover



Dimensions (±5 mm)	V 115 400 75 F42 P5	V 155 500 75 F42 P5
a [mm]	1409	1674
b [mm]	1165	1450
c [mm]	849	1038
d [mm]	533	626
e [mm]	217	214
h [mm]	464	719
m [mm]	307	289
n [mm]	780	934
D [mm]	67	67
Ø C [mm]	750	750
Ø D [mm]	650	650
R1 [mm]	1590	1825



L1; 2; 3; 4 - level 1; 2; 3; 4 - G 1½"  
 TS1; 2; 3; 4 - thermosensors level 1; 2; 3; 4 - G ½"  
 TSS1 - thermosensor heat exchanger - G ½"  
 IS1 - inlet heat exchanger - G 1"  
 OS1 - outlet heat exchanger - G 1"  
 AV - air vent - G 1½"  
 D - drainage - G ¾" B

Thread designations according to EN ISO 228-11

# AD-H 500

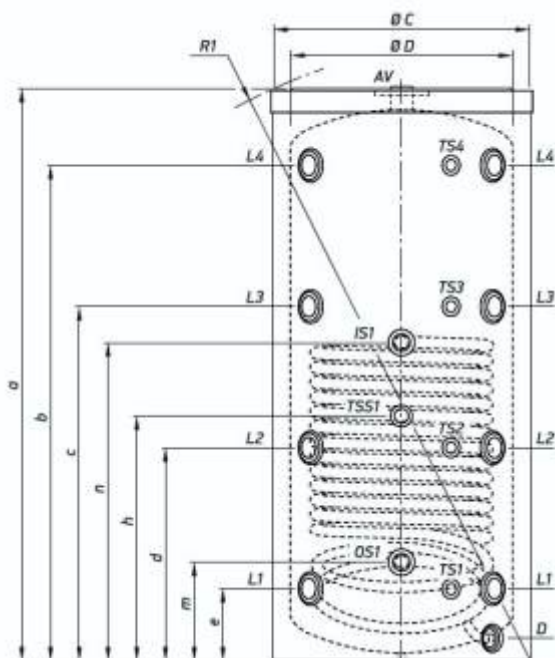


## Main information

### Technical characteristics

Nominal capacity [L]	500 L
Water tank protection type	Steel water tank - not enameled
Rated pressure of the water tank	0.3 MPa
Safety valve	Yes
Pocket for thermosensor	5 pcs.
4+5 Inlet / Outlet	Yes
Draining outlet	Yes
Heat exchanger surface [m <sup>2</sup> ]	2.25 m <sup>2</sup>
Heat exchanger capacity [L]	13.7 L
Heat losses ΔT45K	3.1 kWh/24h
Maximum operational temperature	95 T°C
Maximum operational temperature of the heat exchanger	110 T°C
Dimensions [mm] [D/h]	750 mm x 1674 mm
Net weight [kg]	104

- Steel water tank - not enameled
- Highly efficient Soft PU insulation 100 mm
- External Thermoindicator
- Safety valve
- 4 pockets for thermosensors
- 4 + 5 system connections
- Inlet connection
- Airvent/Outlet connection
- Draining outlet
- Plastic cover



Dimensions (±5 mm)	V 115 400 75 F4.2 P5	V 155 500 75 F4.2 P5
a [mm]	1609	1674
b [mm]	1165	1450
c [mm]	849	1038
d [mm]	533	626
e [mm]	217	214
h [mm]	464	719
m [mm]	307	289
n [mm]	780	934
D [mm]	67	67
Ø C [mm]	750	750
Ø D [mm]	650	650
R1 [mm]	1590	1825



L1; 2; 3; 4 - level 1; 2; 3; 4 - G 1½"  
 TS1; 2; 3; 4 - thermosensors level 1; 2; 3; 4 - G ½"  
 TSS1 - thermosensor heat exchanger - G ½"  
 IS1 - inlet heat exchanger - G 1"  
 OS1 - outlet heat exchanger - G 1"  
 AV - air vent - G 1½"  
 D - drainage - G ¾" B

Thread designations according to EN ISO 228-II

# AD-H 800

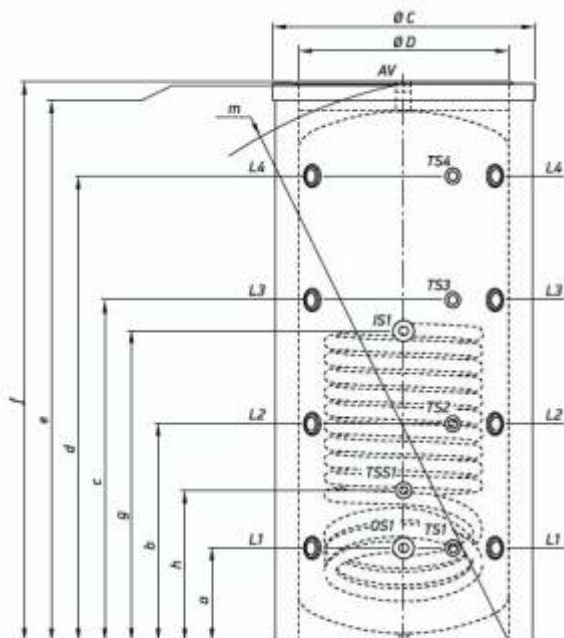


## Main information

### Technical characteristics

Nominal capacity [L]	800 L
Water tank protection type	Steel water tank - not enameled
Rated pressure of the water tank	0.3 MPa
Safety valve	Yes
Pocket for thermosensor	5 pcs.
4+5 Inlet / Outlet	Yes
Draining outlet	Yes
Heat exchanger surface [m <sup>2</sup> ]	2.89 m <sup>2</sup>
Heat exchanger capacity [L]	26.2 L
Heat losses $\Delta T_{45K}$	5.1 kWh/24h
Maximum operational temperature	95 T°C
Maximum operational temperature of the heat exchanger	110 T°C
Dimensions [mm] [D/h]	990 mm x 1937 mm
Net weight [kg]	169

- Steel water tank - not enameled
- Highly efficient Soft PU insulation 100 mm
- External Thermoindicator
- Safety valve
- 4 pockets for thermosensors
- 4 + 5 system connections
- Inlet connection
- Airvent/Outlet connection
- Draining outlet
- Plastic cover



Dimensions (±5 mm)	V 125 800 79	V 135 1000 79	V 125 1500 100	V 155 2000 110
a [mm]	360	360	427	446
b [mm]	760	832	880	929
c [mm]	1120	1303	1293	1412
d [mm]	1500	1774	1726	1896
e [mm]	1921	2121	2220	2413
f [mm]	1947	2132	2220	2413
g [mm]	1021	1186	1087	1271
h [mm]	581	581	647	646
m [mm]	1960	2155	2265	2481
Ø C [mm]	990	990	1200	1300
Ø D [mm]	790	790	1000	1100

#### V 125 800 79, V 135 1000 79

L1; 2; 3; 4 - level 1; 2; 3; 4 - G 1½"  
 TS1; 2; 3; 4 - thermosensors level 1; 2; 3; 4 - G ½"  
 TSS1 - thermosensor heat exchanger - G ½"  
 IS1 - inlet heat exchanger - G 1½" B  
 OS1 - outlet heat exchanger - G 1½" B  
 AV - air vent - G 1½"

#### V 125 1500 100, V 155 2000 110

L1; 2; 3; 4 - level 1; 2; 3; 4 - G 2" B  
 TS1; 2; 3; 4 - thermosensors level 1; 2; 3; 4 - G ½"  
 TSS1 - thermosensor heat exchanger - G ½"  
 IS1 - inlet heat exchanger - G 1½" B  
 OS1 - outlet heat exchanger - G 1½" B  
 AV - air vent - G 2" B

Thread designations according to EN ISO 228-1

# AD-H 1000

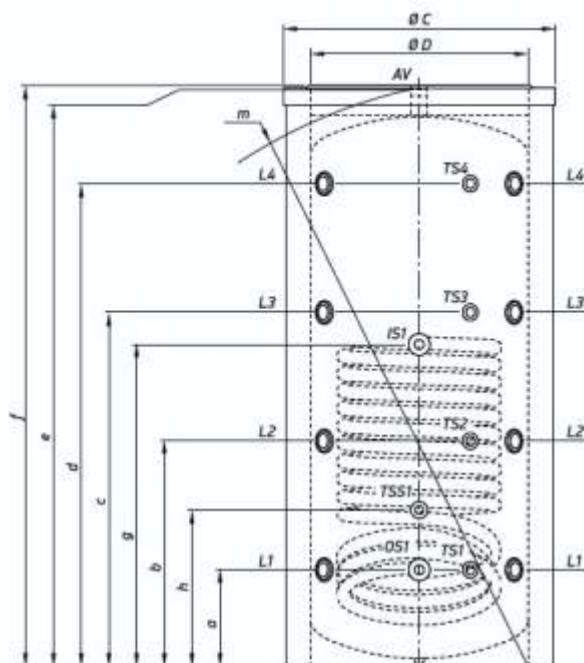


## Main information

### Technical characteristics

Nominal capacity [L]	988 L
Water tank protection type	Steel water tank - not enameled
Rated pressure of the water tank	0.3 MPa
Safety valve	Yes
Pocket for thermosensor	5 pcs.
4+5 Inlet / Outlet	Yes
Draining outlet	Yes
Heat exchanger surface [m <sup>2</sup> ]	3.45 m <sup>2</sup>
Heat exchanger capacity [L]	31.3
Heat losses ΔT45K	5.3 kWh/24h
Maximum operational temperature	95 T°C
Maximum operational temperature of the heat exchanger	110 T°C
Dimensions [mm] [D/h]	1050 mm x 2002 mm
Net weight [kg]	190

- Steel water tank - not enameled
- Highly efficient Soft PU insulation 100 mm
- External Thermoindicator
- Safety valve
- 4 pockets for thermosensors
- 4 + 5 system connections
- Inlet connection
- Airvent/Outlet connection
- Draining outlet
- Plastic cover



Dimensions (±5 mm)	V 125 800 79	V 135 1000 79	V 125 1500 100	V 155 2000 110
a (mm)	360	360	427	446
b (mm)	240	832	860	929
c (mm)	1120	1303	1293	1412
d (mm)	1500	1774	1726	1896
e (mm)	1921	2121	2220	2413
f (mm)	1947	2132	2220	2413
g (mm)	1021	1186	1087	1271
h (mm)	581	581	647	646
m (mm)	1960	2155	2265	2481
Ø C (mm)	990	990	1200	1300
Ø D (mm)	790	790	1000	1100

V 125 800 79, V 135 1000 79

L1; 2; 3; 4 - level 1; 2; 3; 4 - G 1½"

TS1; 2; 3; 4 - thermosensors level 1; 2; 3; 4 - G ½"

TSS1 - thermosensor heat exchanger - G ½"

IS1 - inlet heat exchanger - G 1½" B

OS1 - outlet heat exchanger - G 1½" B

AV - air vent - G 1½"

V 125 1500 100, V 155 2000 110

L1; 2; 3; 4 - level 1; 2; 3; 4 - G 2" B

TS1; 2; 3; 4 - thermosensors level 1; 2; 3; 4 - G ½"

TSS1 - thermosensor heat exchanger - G ½"

IS1 - inlet heat exchanger - G 1½" B

OS1 - outlet heat exchanger - G 1½" B

AV - air vent - G 2" B

Thread designations according to EN ISO 228-R1



# AD-H 1500

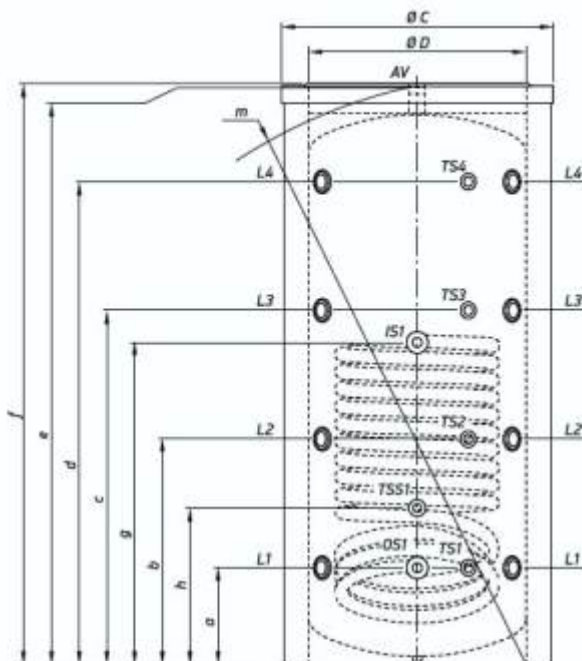


## Main information

### Technical characteristics

Nominal capacity [L]	1500 L
Water tank protection type	Steel water tank - not enameled
Rated pressure of the water tank	0.3 MPa
Safety valve	Yes
Pocket for thermosensor	5 pcs.
4+5 Inlet / Outlet	Yes
Draining outlet	Yes
Heat exchanger surface [m <sup>2</sup> ]	3.47 m <sup>2</sup>
Heat exchanger capacity [L]	31.4
Heat losses ΔT45K	6.5 kWh/24h
Maximum operational temperature	95 T°C
Maximum operational temperature of the heat exchanger	110 T°C
Dimensions [mm] [D/h]	1200 mm x 2216 mm
Net weight [kg]	339

- Steel water tank - not enameled
- Highly efficient Soft PU insulation 100 mm
- External Thermoindicator
- Safety valve
- 4 pockets for thermosensors
- 4 + 5 system connections
- Inlet connection
- Airvent/Outlet connection
- Draining outlet
- Plastic cover



Dimensions [±5 mm]	V 125 800 79	V 135 1000 79	V 125 1500 100	V 155 2000 110
a [mm]	360	360	427	446
b [mm]	240	832	860	929
c [mm]	1120	1303	1293	1412
d [mm]	1500	1774	1726	1896
e [mm]	1921	2121	2220	2413
f [mm]	1947	2132	2220	2413
g [mm]	1021	1186	1087	1271
h [mm]	581	581	647	646
m [mm]	1960	2155	2265	2481
Ø C [mm]	990	990	1200	1300
Ø D [mm]	790	790	1000	1100

#### V 125 800 79, V 135 1000 79

L1; 2; 3; 4 - level 1; 2; 3; 4 - G 1½"  
 TS1; 2; 3; 4 - thermosensors level 1; 2; 3; 4 - G ½"  
 TSS1 - thermosensor heat exchanger - G ½"  
 IS1 - inlet heat exchanger - G 1½" B  
 OS1 - outlet heat exchanger - G 1½" B  
 AV - air vent - G 1½"

#### V 125 1500 100, V 155 2000 110

L1; 2; 3; 4 - level 1; 2; 3; 4 - G 2" B  
 TS1; 2; 3; 4 - thermosensors level 1; 2; 3; 4 - G ½"  
 TSS1 - thermosensor heat exchanger - G ½"  
 IS1 - inlet heat exchanger - G 1½" B  
 OS1 - outlet heat exchanger - G 1½" B  
 AV - air vent - G 2" B

Thread designations according to EN ISO 228-R1

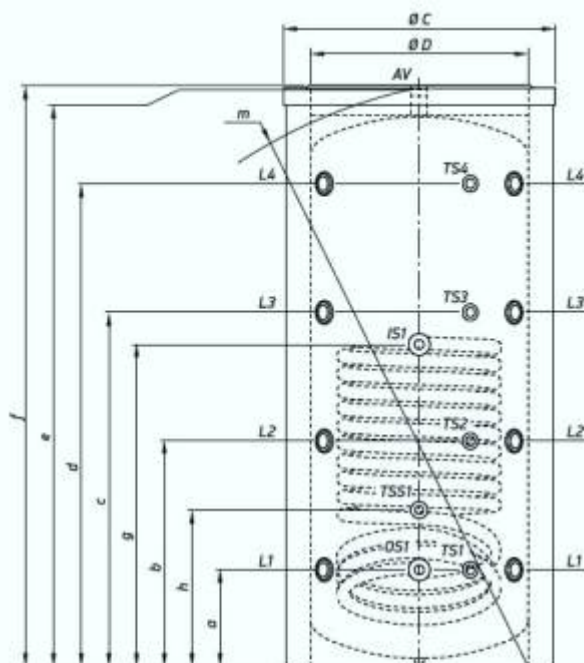
# AD-H 2000



## Main information

Technical characteristics	
Nominal capacity [L]	1950 L
Water tank protection type	Steel water tank - not enameled
Rated pressure of the water tank	0.3 MPa
Safety valve	Yes
Pocket for thermosensor	5 pcs.
4+5 Inlet / Outlet	Yes
Draining outlet	Yes
Heat exchanger surface [m <sup>2</sup> ]	4.5 m <sup>2</sup>
Heat exchanger capacity [L]	41.6 L
Heat losses ΔT45K	8.3 kWh/24h
Maximum operational temperature	95 T°C
Maximum operational temperature of the heat exchanger	110 T°C
Dimensions [mm] [D/h]	1300 mm x 2412 mm
Net weight [kg]	430

- Steel water tank - not enameled
- Highly efficient Soft PU insulation 100 mm
- External Thermindicator
- Safety valve
- 4 pockets for thermosensors
- 4 + 5 system connections
- Inlet connection
- Airvent/Outlet connection
- Draining outlet
- Plastic cover



Dimensions [±5 mm]	V 125 800 79	V 135 1000 79	V 125 1500 100	V 155 2000 110
a [mm]	360	360	427	446
b [mm]	240	832	860	929
c [mm]	1120	1303	1293	1412
d [mm]	1500	1774	1726	1896
e [mm]	1921	2121	2220	2413
f [mm]	1947	2132	2220	2413
g [mm]	1021	1186	1087	1271
h [mm]	581	581	647	646
m [mm]	1960	2155	2265	2481
Ø C [mm]	990	990	1200	1300
Ø D [mm]	790	790	1000	1100

V 125 800 79, V 135 1000 79

L1; 2; 3; 4 - level 1; 2; 3; 4 - G 1½"

TS1; 2; 3; 4 - thermosensors level 1; 2; 3; 4 - G ½"

TSS1 - thermosensor heat exchanger - G ½"

IS1 - inlet heat exchanger - G 1½" B

OS1 - outlet heat exchanger - G 1½" B

AV - air vent - G 1½"

V 125 1500 100, V 155 2000 110

L1; 2; 3; 4 - level 1; 2; 3; 4 - G 2" B

TS1; 2; 3; 4 - thermosensors level 1; 2; 3; 4 - G ½"

TSS1 - thermosensor heat exchanger - G ½"

IS1 - inlet heat exchanger - G 1½" B

OS1 - outlet heat exchanger - G 1½" B

AV - air vent - G 2" B

Thread designations according to EN ISO 228-R1

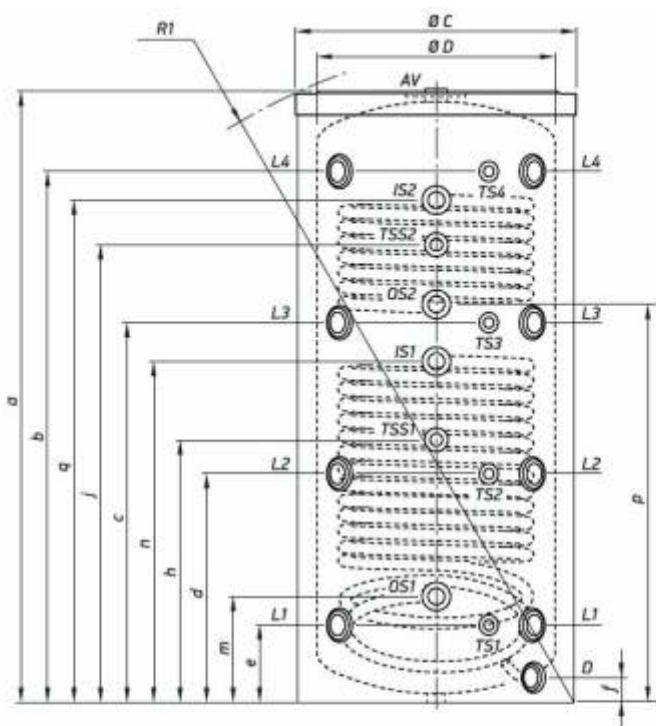
# AD-S 400

## Main information

### Technical characteristics

Nominal capacity [L]	400 L
Water tank protection type	Steel water tank - not enameled
Rated pressure of the water tank	0.3 MPa
Safety valve	Yes
Pocket for thermosensor	6 pcs.
4+5 Inlet / Outlet	Yes
Draining outlet	Yes
Heat exchanger surface S1 [m <sup>2</sup> ]	1.65 m <sup>2</sup>
Heat exchanger surface S2 [m <sup>2</sup> ]	0.76 m <sup>2</sup>
Heat exchanger capacity S1 [L]	10 L
Heat exchanger capacity S2 [L]	4.6 L
Heat losses $\Delta T_{45K}$ [kWh / 24 h]	2.8 kWh/24h
Maximum operational temperature	95 T°C
Maximum operational temperature in the heat exchanger zone	110 T°C
Dimensions [mm] [D/h]	750 mm x 1411 mm
Net weight [kg]	98

- Steel water tank - not enameled
- Highly efficient Soft PU insulation 100 mm
- External Thermoindicator
- Safety valve
- 4 pockets for thermosensors
- 4 + 5 system connections
- Inlet connection
- Airvent/Outlet connection
- Draining outlet
- Plastic cover



Dimensions (±5 mm)	V 11/SS2 400 75 F42 P6	V 15/SS2 500 75 F42 P6
a (mm)	1411	1674
b (mm)	1166	1450
c (mm)	850	1038
d (mm)	534	626
e (mm)	218	214
f (mm)	68	67
h (mm)	465	719
j (mm)	1002	1220
m (mm)	308	289
n (mm)	781	934
p (mm)	864	1048
q (mm)	1079	1349
Ø C (mm)	750	750
Ø D (mm)	650	650
R1 (mm)	1592	1826



L1; 2; 3; 4 - level 1; 2; 3; 4 - G 1½"  
 TS1; 2; 3; 4 - thermosensors level 1; 2; 3; 4 - G ½"  
 TSS1; 2 - thermosensor heat exchanger 1; 2 - G ½"  
 IS1; 2 - inlet heat exchanger 1; 2 - G 1"  
 OS1; 2 - outlet heat exchanger 1; 2 - G 1"  
 AV - air vent - G 1½"  
 D - drainage - G ¾" B

Thread designations according to EN ISO 228-1



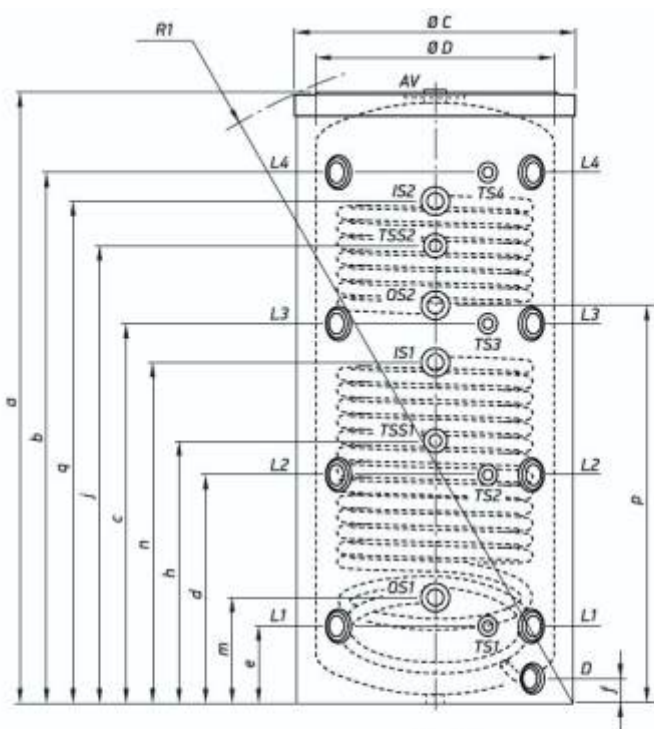
# AD-S 500

## Main information

### Technical characteristics

Nominal capacity [L]	500 L
Water tank protection type	Steel water tank - not enameled
Rated pressure of the water tank	0.3 MPa
Safety valve	Yes
Pocket for thermosensor	6 pcs.
4+5 Inlet / Outlet	Yes
Draining outlet	Yes
Heat exchanger surface S1 [m <sup>2</sup> ]	2.25 m <sup>2</sup>
Heat exchanger surface S2 [m <sup>2</sup> ]	1.04 m <sup>2</sup>
Heat exchanger capacity S1 [L]	13.7
Heat exchanger capacity S2 [L]	6.4
Heat losses $\Delta T_{45K}$ [kWh / 24 h]	3.1 kWh/24h
Maximum operational temperature	95 T°C
Maximum operational temperature in the heat exchanger zone	110 T°C
Dimensions [mm] [D/h]	750 mm x 1674 mm
Net weight [kg]	123

- Steel water tank - not enameled
- Highly efficient Soft PU insulation 100 mm
- External Thermoindicator
- Safety valve
- 4 pockets for thermosensors
- 4 + 5 system connections
- Inlet connection
- Airvent/Outlet connection
- Draining outlet
- Plastic cover



Dimensions [±5 mm]	V 11/SS2 400 75 F42 P6	V 15/TS2 500 75 F42 P6
a [mm]	1411	1674
b [mm]	1166	1450
c [mm]	850	1038
d [mm]	534	626
e [mm]	218	214
f [mm]	68	67
h [mm]	465	719
j [mm]	1002	1220
m [mm]	308	289
n [mm]	781	934
p [mm]	864	1048
q [mm]	1079	1349
Ø C [mm]	750	750
Ø D [mm]	650	650
R1 [mm]	1592	1826

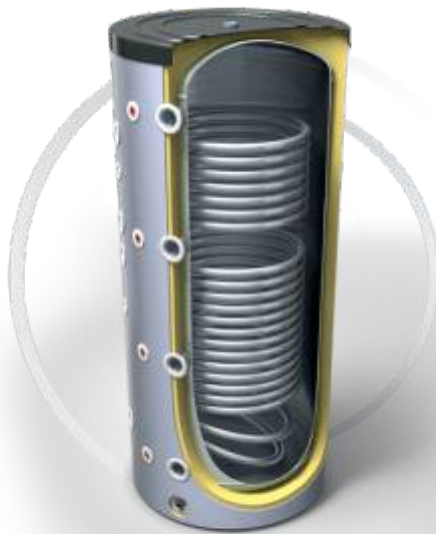


L1; 2; 3; 4 - level 1; 2; 3; 4 - G 1½"  
 TS1; 2; 3; 4 - thermosensors level 1; 2; 3; 4 - G ½"  
 TSS1; 2 - thermosensor heat exchanger 1; 2 - G ½"  
 IS1; 2 - inlet heat exchanger 1; 2 - G 1"  
 OS1; 2 - outlet heat exchanger 1; 2 - G 1"  
 AV - air vent - G 1½"  
 D - drainage - G ¾" B

Thread designations according to EN ISO 228-1/



# AD-S 800

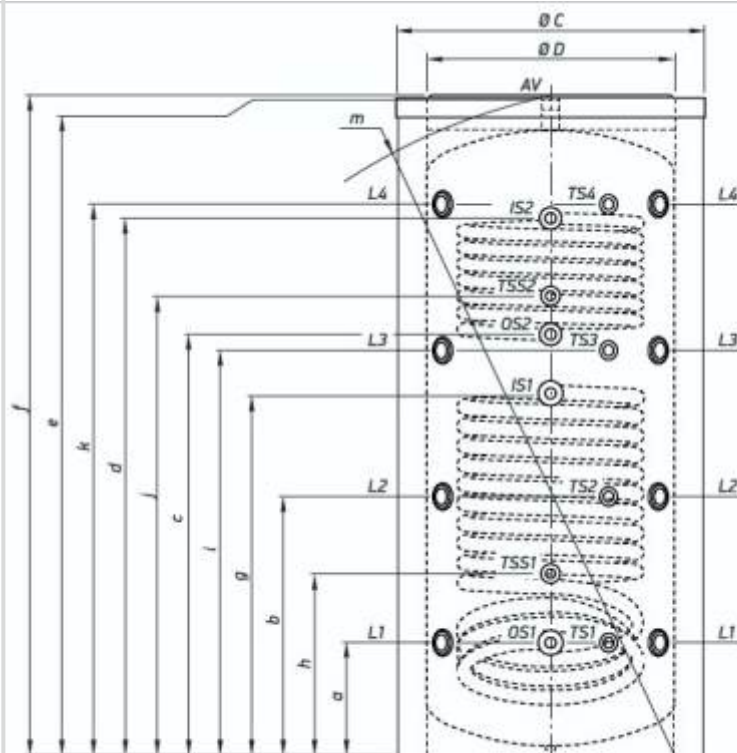


## Main information

### Technical characteristics

Nominal capacity [L]	800 L
Water tank protection type	Steel water tank - not enameled
Rated pressure of the water tank	0.3 MPa
Safety valve	Yes
Pocket for thermosensor	6 pcs.
4+5 Inlet / Outlet	Yes
Draining outlet	Yes
Heat exchanger surface S1 [m²]	2.89 m²
Heat exchanger surface S2 [m²]	1.54 m²
Heat exchanger capacity S1 [L]	26.2 L
Heat exchanger capacity S2 [L]	9.4 L
Heat losses $\Delta T_{45K}$ [kWh / 24 h]	5.1 kWh/24h
Maximum operational temperature	95 T°C
Maximum operational temperature in the heat exchanger zone	110 T°C
Dimensions [mm] [D/h]	990 mm x 1937 mm
Net weight [kg]	191

- Steel water tank - not enameled
- Highly efficient Soft PU insulation 100 mm
- External Thermindicator
- Safety valve
- 4 pockets for thermosensors
- 4 + 5 system connections
- Inlet connection
- Airvent/Outlet connection
- Draining outlet
- Plastic cover



Dimensions [±5 mm]	V 12/9S2 800 79	V 13/7S2 1000 79	V 12/8S2 1500 100	V 15/9S2 2000 110
a [mm]	360	360	427	446
b [mm]	740	832	860	929
c [mm]	1120	1303	1293	1412
d [mm]	1500	1774	1726	1896
e [mm]	1921	2121	2220	2413
f [mm]	1947	2132	2220	2413
g [mm]	1021	1186	1087	1271
h [mm]	581	581	647	646
i [mm]	1120	1360	1293	1412
j [mm]	1388	1501	1461	1565
k [mm]	1508	1746	1733	1903
m [mm]	1960	2155	2265	2481
Ø C [mm]	990	990	1200	1300
Ø D [mm]	790	790	1000	1100



### V 12/9S2 800 79, V 13/7S2 1000 79

L1; 2; 3; 4 - level 1; 2; 3; 4 - G 1½"

TS1; 2; 3; 4 - thermosensors level 1; 2; 3; 4 - G ½"

TSS1; 2 - thermosensor heat exchanger 1; 2 - G ½"

IS1 - inlet heat exchanger 1 - G 1½" B

IS2 - inlet heat exchanger 2 - G 1" B

OS1 - outlet heat exchanger 1 - G 1½" B

OS2 - outlet heat exchanger 2 - G 1" B

AV - air vent - G 1½"

### V 12/8S2 1500 100, V 15/9S2 2000 110

L1; 2; 3; 4 - level 1; 2; 3; 4 - G 2" B

TS1; 2; 3; 4 - thermosensors level 1; 2; 3; 4 - G ½"

TSS1; 2 - thermosensor heat exchanger 1; 2 - G ½"

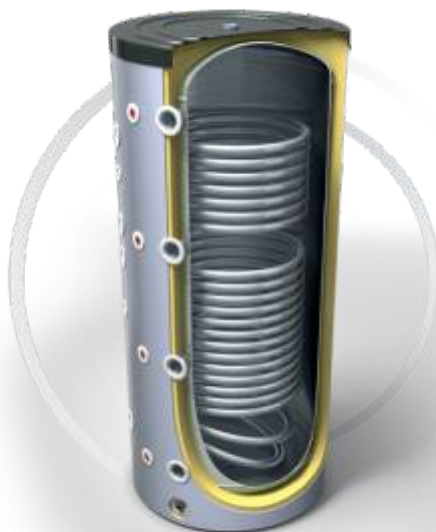
IS1; 2 - inlet heat exchanger 1; 2 - G 1½" B

OS1; 2 - outlet heat exchanger 1; 2 - G 1½" B

AV - air vent - G 2" B

Thread designations according to EN ISO 228-11

# AD-S 1000

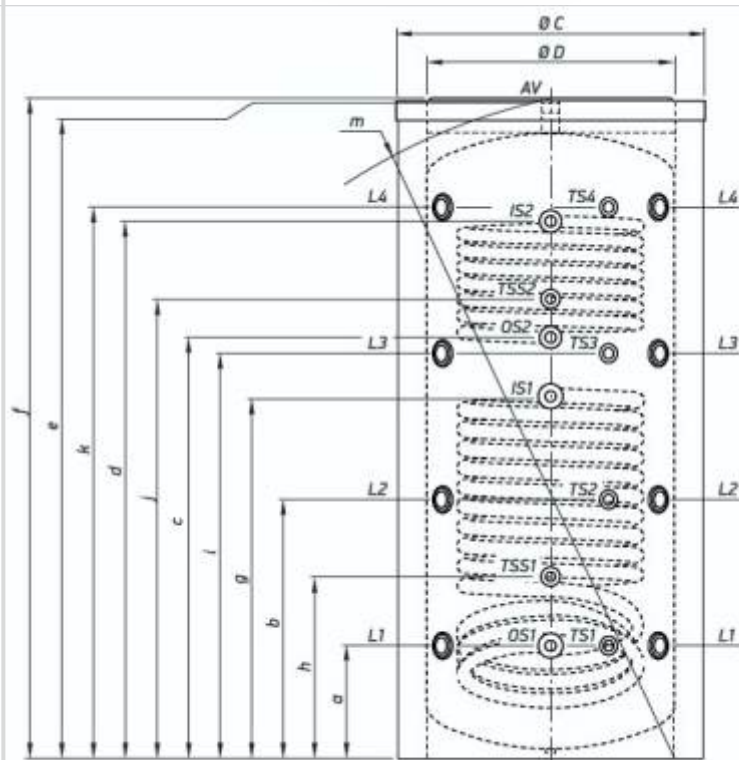


## Main information

### Technical characteristics

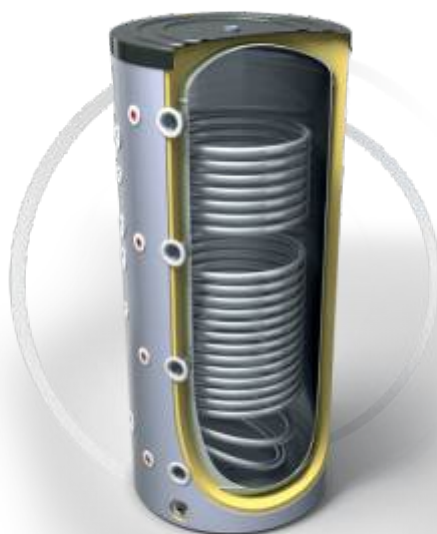
Nominal capacity [L]	977 L
Water tank protection type	Steel water tank - not enameled
Rated pressure of the water tank	0.3 MPa
Safety valve	Yes
Pocket for thermosensor	6 pcs.
4+5 Inlet / Outlet	Yes
Draining outlet	Yes
Heat exchanger surface S1 [m²]	3.45 m²
Heat exchanger surface S2 [m²]	1.31 m²
Heat exchanger capacity S1 [L]	31.1 L
Heat exchanger capacity S2 [L]	7.9 L
Heat losses $\Delta T_{45K}$ [kWh / 24 h]	5.3 kWh/24h
Maximum operational temperature	95 °C
Maximum operational temperature in the heat exchanger zone	110 °C
Dimensions [mm] [D/h]	1050 mm x 2002 mm
Net weight [kg]	206

- Steel water tank - not enameled
- Highly efficient Soft PU insulation 100 mm
- External Thermoindicator
- Safety valve
- 4 pockets for thermosensors
- 4 + 5 system connections
- Inlet connection
- Airvent/Outlet connection
- Draining outlet
- Plastic cover



# AD-S 1500

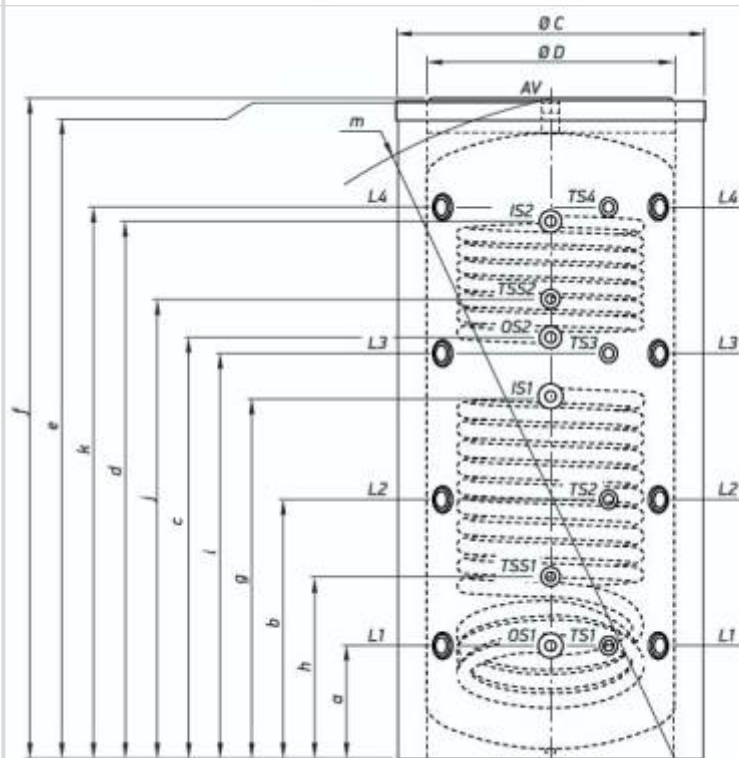
## Main information



### Technical characteristics

Nominal capacity [L]	1500 L
Water tank protection type	Steel water tank - not enameled
Rated pressure of the water tank	0.3 MPa
Safety valve	Yes
Pocket for thermosensor	6 pcs.
4+5 Inlet / Outlet	Yes
Draining outlet	Yes
Heat exchanger surface S1 [m²]	3.47 m²
Heat exchanger surface S2 [m²]	2.3 m²
Heat exchanger capacity S1 [L]	31.4 L
Heat exchanger capacity S2 [L]	20.5 L
Heat losses $\Delta T_{45K}$ [kWh / 24 h]	6.5 kWh/24h
Maximum operational temperature	95 T°C
Maximum operational temperature in the heat exchanger zone	110 T°C
Dimensions [mm] [D/H]	1200 mm x 2216 mm
Net weight [kg]	376

- Steel water tank - not enameled
- Highly efficient Soft PU insulation 100 mm
- External Thermoindicator
- Safety valve
- 4 pockets for thermosensors
- 4 + 5 system connections
- Inlet connection
- Airvent/Outlet connection
- Draining outlet
- Plastic cover





# AD-S 2000

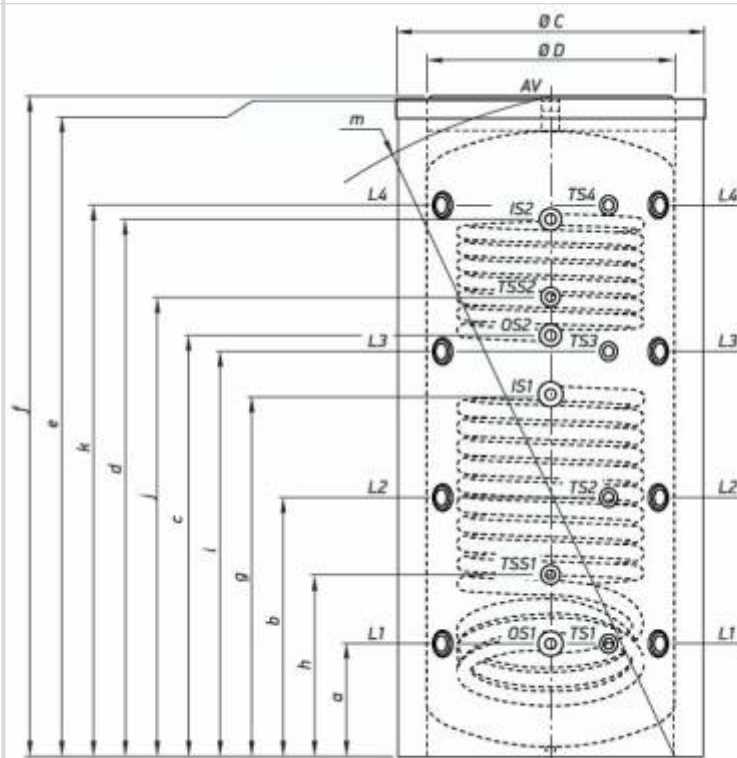


## Main information

### Technical characteristics

Nominal capacity [L]	1928 L
Water tank protection type	Steel water tank - not enameled
Rated pressure of the water tank	0.3 MPa
Safety valve	Yes
Pocket for thermosensor	6 pcs.
4+5 Inlet / Outlet	Yes
Draining outlet	yes
Heat exchanger surface S1 [m²]	4.5 m²
Heat exchanger surface S2 [m²]	2.7 m²
Heat exchanger capacity S1 [L]	41.6 L
Heat exchanger capacity S2 [L]	25.2 L
Heat losses $\Delta T_{45K}$ [kWh / 24 h]	8.3 kWh/24h
Maximum operational temperature	95 T°C
Maximum operational temperature in the heat exchanger zone	110 T°C
Dimensions [mm] [D/h]	1300 mm x 2412 mm
Net weight [kg]	476

- Steel water tank - not enameled
- Highly efficient Soft PU insulation 100 mm
- External Thermoindicator
- Safety valve
- 4 pockets for thermosensors
- 4 + 5 system connections
- Inlet connection
- Airvent/Outlet connection
- Draining outlet
- Plastic cover





# AD-TANK 600



## Main information

### Technical characteristics

Actual capacity bufer tank	447 l
Actual capacity hot water tank	142 l
Heat exchanger surface S1 [m²]	2.25
Heat exchanger capacity S1 [L]	13.7
Heat losses $\Delta T_{45K}$ [kWh / 24 h]	4.8
Nominal pressure of bufer tank	0.3
Maximum pressure of hot water tank	1
Maximum pressure of heat exchanger coil	0.6
Insulation (Soft PU)	100
Maximum operational temperature of bufer tank	95
Maximum operational temperature of hot water tank	95
Maximum operational temperature of heat exchanger coil	110
Dimensions [mm] [D/h]	850 x 2065
Net weight [kg]	167

- Hot water tank(inner tank) - enameled according to DIN 4753
- Buffer heating tank (outer) - high quality steel grade S 235 JR
- Highly efficient Soft PU insulation 100 mm
- External Thermoindicator
- 4 pockets for thermosensors
- 4 + 5 system connections
- Inlet connection
- Airvent/Outlet connection
- Draining outlet
- Plastic cover

# AD-TANK 800



## Main information

Technical characteristics	
Actual capacity bufer tank	590 l
Actual capacity hot water tank	184 l
Heat exchanger surface S1 [m²]	2.89
Heat exchanger capacity S1 [L]	26.2
Heat losses $\Delta T45K$ [kWh / 24 h]	5.1
Nominal pressure of bufer tank	0.3
Maximum pressure of hot water tank	1
Maximum pressure of heat exchanger coil	0.6
Insulation (Soft PU)	100
Maximum operational temperature of bufer tank	95
Maximum operational temperature of hot water tank	95
Maximum operational temperature of heat exchanger coil	110
Dimensions [mm] [D/h]	990 x 1956
Net weight [kg]	241
Warranty	-

- Hot water tank(inner tank) - enameled according to DIN 4753
- Buffer heating tank (outer) - high quality steel grade S 235 JR
- Highly efficient Soft PU insulation 100 mm
- External Thermoindicator
- 4 pockets for thermosensors
- 4 + 5 system connections
- Inlet connection
- Airvent/Outlet connection
- Draining outlet
- Plastic cover

# AD-TANK 1000



## Main information

### Technical characteristics

Actual capacity bufer tank	702 l
Actual capacity hot water tank	184 l
Heat exchanger surface S1 [m <sup>2</sup> ]	3.3
Heat exchanger capacity S1 [L]	29
Heat losses $\Delta T45K$ [kWh / 24 h]	5.5
Nominal pressure of bufer tank	0.3
Maximum pressure of hot water tank	1
Maximum pressure of heat exchanger coil	0.6
Insulation (Soft PU)	100
Maximum operational temperature of bufer tank	95
Maximum operational temperature of hot water tank	95
Maximum operational temperature of heat exchanger coil	110
Dimensions [mm] [D/h]	990 x 2141
Net weight [kg]	296
Warranty	-

- Hot water tank(inner tank) - enameled according to DIN 4753
- Buffer heating tank (outer) - high quality steel grade S 235 JR
- Highly efficient Soft PU insulation 100 mm
- External Thermoindicator
- 4 pockets for thermosensors
- 4 + 5 system connections
- Inlet connection
- Airvent/Outlet connection
- Draining outlet
- Plastic cover

# AD-TANK 1500



## Main information

### Technical characteristics

Actual capacity bufer tank	1153 l
Actual capacity hot water tank	302 l
Heat exchanger surface S1 [m²]	3.47
Heat exchanger capacity S1 [L]	31.4
Heat losses $\Delta T45K$ [kWh / 24 h]	6.5
Nominal pressure of bufer tank	0.3
Maximum pressure of hot water tank	1
Maximum pressure of heat exchanger coil	0.6
Insulation (Soft PU)	100
Maximum operational temperature of bufer tank	95
Maximum operational temperature of hot water tank	95
Maximum operational temperature of heat exchanger coil	110
Dimensions [mm] [D/h]	1200 x 2216
Net weight [kg]	348
Warranty	-

- Hot water tank(inner tank) - enameled according to DIN 4753
- Buffer heating tank (outer) - high quality steel grade S 235 JR
- Highly efficient Soft PU insulation 100 mm
- External Thermoindicator
- 4 pockets for thermosensors
- 4 + 5 system connections
- Inlet connection
- Airvent/Outlet connection
- Draining outlet
- Plastic cover





# **Δ. ΑΝΑΣΤΑΣΙΑΔΗΣ Α.Ε.**

## **ΤΕΧΝΙΚΗ • ΕΜΠΟΡΙΚΗ • ΚΑΤΑΣΚΕΥΑΣΤΙΚΗ • ΕΤΑΙΡΕΙΑ**

ΑΠΟΘΗΚΗ - ΛΟΓΙΣΤΗΡΙΟ - SERVICE  
1ο ΧΛΜ. Ε.Ο. ΚΑΤΕΡΙΝΗΣ-ΓΑΝΟΧΩΡΑΣ  
ΤΗΛ.: 23510 28624  
FAX : 23510 33454  
EMAIL: center@adtherm.com

ΕΚΘΕΣΗ - ΤΕΧΝΙΚΟ ΤΜΗΜΑ  
Τ. ΤΕΡΖΟΠΟΥΛΟΥ 8 - ΚΑΤΕΡΙΝΗ  
ΤΗΛ.: 23510 26796  
EMAIL: info@adgreen.gr  
info@adtherm.gr

ΕΚΘΕΣΗ - ΤΕΧΝΙΚΟ ΤΜΗΜΑ  
Γ. ΚΟΛΩΝΙΑΡΗ 35  
ΘΕΣΣΑΛΟΝΙΚΗ  
ΤΗΛ.-FAX: 2310 729814  
EMAIL: thes@adtherm.com

**WWW.AD THERM.GR**